

KS

OUTDOOR / INDOOR USE

Securing the places people work, study, live and visit.

- ▶ Corporate Campuses
- ▶ Shopping Malls
- ▶ Hospitals
- ▶ Casinos
- ▶ Retailers
- ▶ Parking Areas
- ▶ Apartment Complexes
- ▶ Warehouses
- ▶ Logistics Facilities
- ▶ College Campuses
- ▶ Airports, Bus & Train Stations

UNIQUE BENEFITS

- ▶ Force multiplying mobile physical deterrence
- ▶ Workplace violence protection
- ▶ Person of Interest or BOLO Alerts
- ▶ Crime reduction and/or elimination
- ▶ Real-time situational awareness
- ▶ Actionable intelligence
- ▶ Cost effective Subscription Service

KEY FEATURES

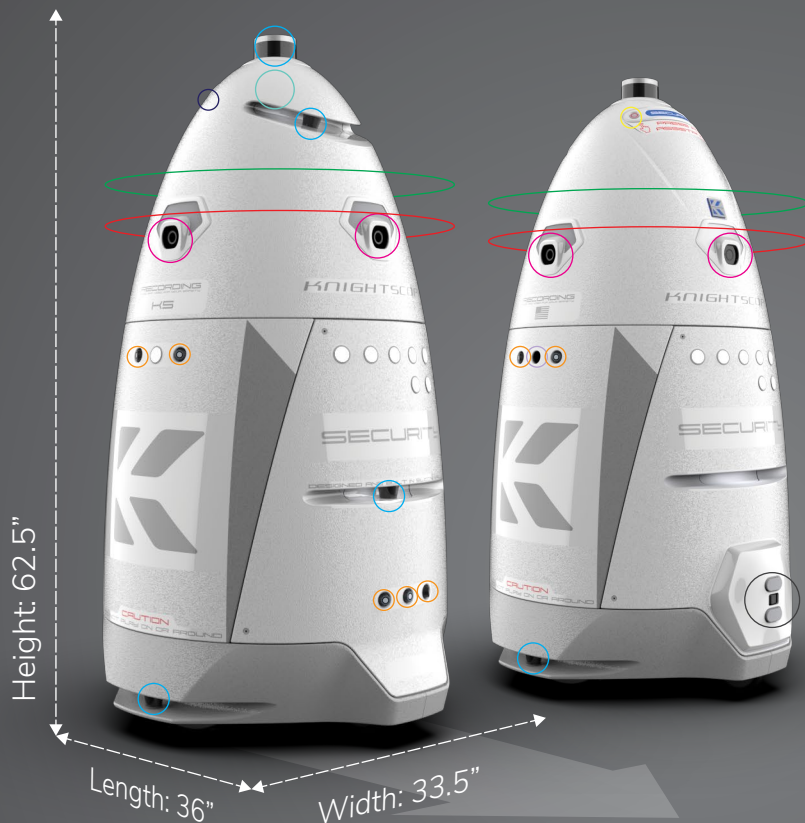
- ▶ 360° Eye-level Ultra HD Recording
- ▶ Security Call Button
- ▶ Live Audio and Two-way Intercom
- ▶ Broadcast Messages
- ▶ People Detection
- ▶ Automatic License Plate Recognition
- ▶ Thermal Detection
- ▶ Signal Detection



Don't have your own monitoring? Ask about KnightScope+

K5

OUTDOOR / INDOOR USE



Speed: Up to 3 mph. Weight: 398 lbs.

- (4) HD cameras w/ wide angle lenses
- (1) Infrared thermal camera
- (16) Microphones
- (1) Amplified P.A. speaker/horn
- (1) Strobe light

Navigation

- (5) Lidar sensors
- (7) Sonar sensors

Cellular Connectivity

- 4G LTE Cellular connection

Intercom Button

Directed to client-specified phone number or user interface

Docking Station

Electrical: 120v 20A outlet.

Mounting: The docking station can be installed outdoors and secured to a wall or the ground.

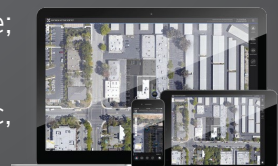


NAVIGATION

- ▶ ADA compliant surfaces, 5' or wider
- ▶ Able to patrol around speed bumps
- ▶ Can navigate on ADA compliant ramps
- ▶ Parking garage ramp inclines/declines: Up to 20% slope "grade"
- ▶ Operating temperature: 0° - 115° outside ambient temperature
- ▶ Patrol time: 2.5 – 3 hours between charges on average
- ▶ Autonomous charging: 20-30 minutes on average

USER INTERFACE

- ▶ Chrome browser interface; no software to install
- ▶ Live streaming to PC, Mac, tablet, cell phone
- ▶ 30-days raw video storage included
- ▶ Operating systems: MacOS, iOS, Android, Windows, Linux



See the K5 in action at:
<https://www.youtube.com/watch?v=DfNUex1SFS8>